

ElasTek™ CureMeter Dies & Rotors



Upper Die



Rotor



Lower Die

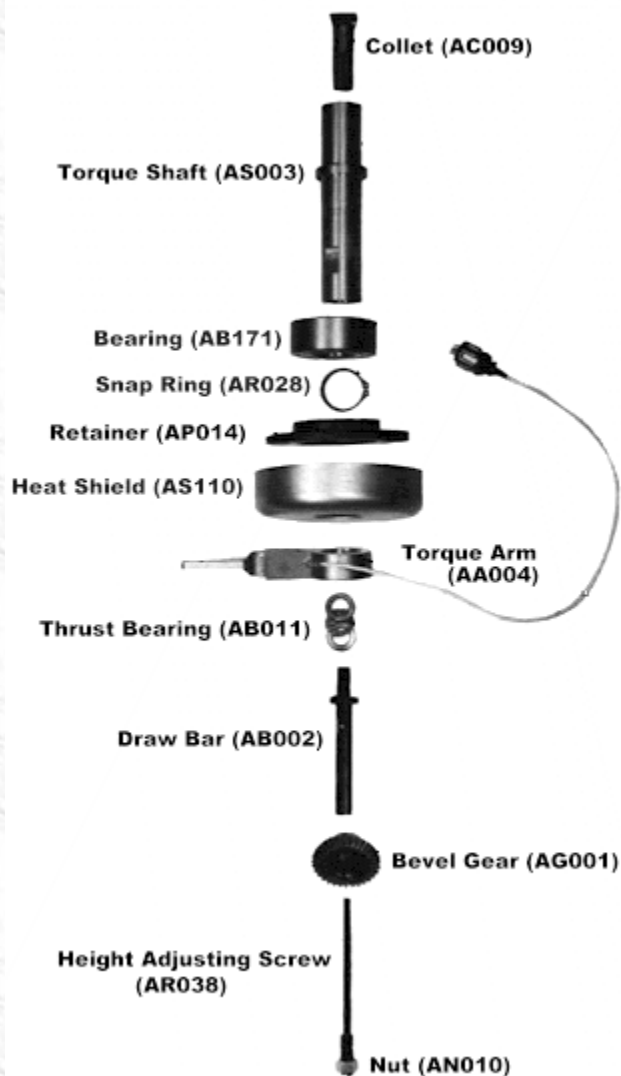
CUREMETER DIES & ROTORS	
Part Number	Description
CDO126	MV2000, Lower Die
CDO127	MV2000, Upper Die
CTR562	MV2000, Large Rotor
CTR563	MV2000, Small Rotor
CDO118	ODR2000, Lower Die
CDO119	ODR2000, Upper Die
CAR177	ODR2000, R100, R100S, TM100 Rotor
CAP108	R100S, R100, TM100 Lower Die
CDO112	R100S, R100, TM100 Upper Die (Solid)
CAP039	Mooney, Upper Die (M1200–M1500)
CAP040	Mooney, Lower Die (M1200–M1500)
CAR050	Mooney, Large Rotor (M1200–M1500)
CAR051	Mooney, Small Rotor (M1200–M1500)
XDR200213	Rheometer (XDR/ODR) Rotor, Heated
XDR200207	Rheometer (XDR/ODR) Rotor, Bulbous
XDR200111	Rheometer (XDR/ODR) Upper Die
XDR200110	Rheometer (XDR/ODR) Lower Die
XDR200104	Viscometer (XDR/Mooney) Upper Die
XDR200103	Viscometer (XDR/Mooney) Lower Die
XDR200210	Viscometer (XDR/Mooney) Large Rotor
XDR200209	Viscometer (XDR/Mooney) Small Rotor
List Price:	Please Submit a Request for Quotation

ElasTek™ CureMeter Rotor Shaft Seals

Rotor Shaft Seals



O RING SEALS FOR CUREMETERS	
Part Number	Description
CAR031	Mooney Seal (Rotor to Lower Die) Viton®, 50 Pack
CAR236	Rheometer Seal (Rotor to Lower Die) Teflon, 50 Pack
CTR449	MV2000 Seal (Rotor to Lower Die) Viton®, 50 Pack
List Price:	Please Submit a Request for Quotation



[Please Submit a Request for Quotation](#) for availability and delivery.

¹ The parts listed above are a *small* representation of those readily or immediately available! CCSi inventories and sources a wide range of instrument parts... please e-mail techinfo@ccsi-inc.com if you have other requirements or questions.

Copyright © 2006 CCSi, Inc. • All Rights Reserved • Published February, 2006

Corporate Consulting, Service & Instruments, Incorporated
221 Beaver Street • Akron, Ohio 44304 USA
Telephone: 800.742.8535 / 330.376.3600 • Facsimile: 800.229.9329 / 330.376.8500
• WWW.CCSI-INC.COM • WWW.ORECOZONE.NET •